



uFace 800

Dual Mode Biometric
Time and Attendance Terminal



Fingerprint



Face ID



PIN



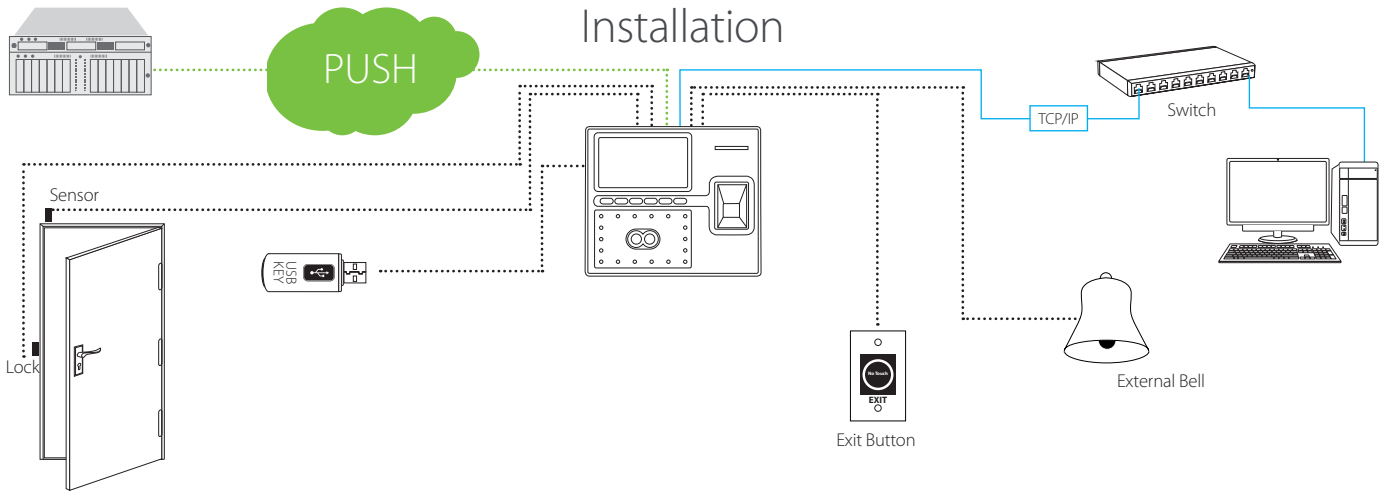
RFID



The uFace800 dual mode biometric time and attendance terminal includes both a camera for facial recognition and a fingerprint capture device for versatile and secure biometric applications.

Standard Functions

- Stores up to 1,500 facial and 3,000 fingerprint templates
- Multi-language support
- Enhanced face detection and verification speed
- Advanced, user-friendly interface
- Battery backup, allowing approximately 4 hours of continuous operation
- New Framework firmware allows easily extended functions to customize to specific end user requirements
- Single facial template is registered per user
- Wi-Fi as a standard feature
- Presented photo detection: able to distinguish between a live image and a photo
- User friendly UI and menu system design
- User level duplicate punch prevention
- Tip entry support
- Multiple level job code support
- Customizable user access control privileges
- Web server support as a standard function
- Automatic status key switch
- Self-service API
- Customizable bell schedules
- Private or public SMS messaging support



Specifications

Display

800 x 480 Pixel, LCD Capacitive Touch Screen

Verification Speed

≤1 sec (typical)

Capacity

ID Cards: 10,000

Transactions: 100,000

Fingerprint templates: 3,000

Face templates: 1,500

Fingerprint Sensor

ZK2750P

Communications

Ethernet, Serial RS 232/RS 485,
USB (host & client), Wi-Fi

Power

12V DC, 3 A

Optional: 12V POE injector (sold separately)

Optional: 12V Battery Backup (sold separately)

Environment

Operating Temperature: 32°F to 113°F (0°C to 45°C)

Operating Humidity: 5% to 80%

Supported Devices

uFace 800 ID-WiFi: Fingerprint and Standard
RFID prox reader

uFace 800 HID-WiFi: Fingerprint and Standard
HID prox reader

Dimensions

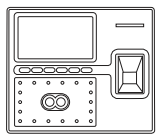
Width : 7.6 in. (19.3 cm)

Height: 6.4 in. (16.5 cm)

Depth: 3.75 in. (9.5 cm)

Weight: 1.75 lbs. (794 g)

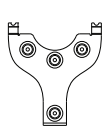
What's in the Box



iFace800



Installation Template



Back Plate



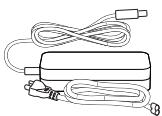
Measuring Tape



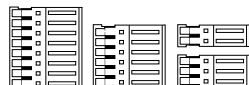
Network Cable



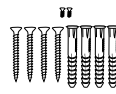
BackUp Battery



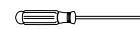
AC Power Adapter



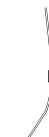
Wire Connectors



Screws



Screwdriver



Diode



Stylus



Design and Specifications subject to change without notice

ZKTeco

200 Centennial Avenue, Suite 211, Piscataway, NJ 08854, USA

+1 732-412-6007 +1 732-412-6008

sales@zktechnology.com | zktechnology.com